



SAU #95
Windham, NH

2022-23 Enrollment Projection Report

Table of Contents

Section	Page
Enrollment Summary.....	1
Historical Enrollment Table.....	2
Historical Enrollment Graph.....	3
Projected Enrollment Table.....	4
Projected Enrollment Graph.....	5
Historical & Projected Enrollment Graph.....	6
Historical & Projected Enrollment in Grade Combinations Line Graph.....	7
Historical & Projected Enrollment in Grade Combinations Stacked Column Graph.....	8
Birth to Kindergarten Relationship Graph.....	9
Additional Information	10
New England's PK-12 Enrollment Trends.....	11
Reliability and Use of this Document	12

Enrollment Summary

The global pandemic continues to influence our nation's public health and economic stability in unpredictable ways. As such, it is still too early to identify many of the factors that could impact school enrollments. Over the past school year, we have seen fluctuations in the real estate market and job trends, which have impacted student attendance patterns. Moreover, during the past school year, we have seen how school enrollment patterns can differ substantially from one district to another, with some districts losing students while others experience an influx of students.

We are pleased to send you this report displaying the past, present, and projected enrollments for the District. These ten-year projections are designed to provide the District with yearly, up-to-date enrollment information that can be used by boards and administrators for effective planning and allocation of resources. Included in this report are graphs representing historical and projected grade-by-grade enrollments, as well as historical and projected enrollments in grade combinations. We have received the figures given to us by the District, and we assume that the method of collecting the enrollment data has been consistent from year to year.

Enrollment projections are more reliable in Years #1-4 in the future and less reliable in the "out-years." Projections six to ten years out may serve as a guide to future enrollments and are useful for planning purposes. In light of this, NESDEC has added a "Second Semester refresher" enrollment projection at no cost to affiliates. (For more information, please refer to the Reliability and Use of This Document section).

The NESDEC enrollment projection fell within 48 students of the K-12 total, 2,999 students projected vs. 2,952 enrolled. One variance of 34 students occurred at Grade 1, 241 projected vs. 207 enrolled. Ratios have been adjusted.

Births increased by 5 from a previous ten-year average of 123 to a projected average of 128. In most districts, enrollments in Grades 1-8 are very stable environments. However, there have been increases in 8 of the 8 most recent years, leading to a net increase averaging 36 students per year.

Over the next three years, K-4 enrollments are projected to increase by +54 students, Grades 5-6 enrollments are projected to increase by +44 students, Grades 7-8 enrollments are projected to remain stable, and Grades 9-12 enrollments are projected to decrease by -148 students, as students move through the grades.

Historical Enrollment

School District: SAU #95 -Windham, NH

10/24/2022

Historical Enrollment By Grade																			
Birth Year	Births*	School Year	PK	K	1	2	3	4	5	6	7	8	9	10	11	12	UNGR	K-12	PK-12
2007	137	2012-13	12	187	226	242	234	223	257	220	214	210	216	198	171	173	0	2771	2783
2008	133	2013-14	10	169	242	230	246	238	231	243	222	219	212	195	199	170	0	2816	2826
2009	112	2014-15	19	145	201	247	234	252	244	237	245	219	220	205	194	195	0	2838	2857
2010	124	2015-16	40	131	185	215	251	237	253	247	238	249	227	227	197	200	0	2857	2897
2011	126	2016-17	60	150	177	193	227	250	244	257	260	243	254	227	221	204	0	2907	2967
2012	107	2017-18	63	141	186	190	197	235	251	250	266	260	234	246	214	224	0	2894	2957
2013	106	2018-19	61	133	196	192	202	201	247	261	258	266	255	225	243	222	1	2902	2963
2014	142	2019-20	65	181	182	205	194	211	201	252	264	261	272	243	226	246	1	2939	3004
2015	125	2020-21	44	185	194	194	203	191	212	203	248	261	266	269	254	231	0	2911	2955
2016	122	2021-22	57	193	222	204	202	215	203	221	200	252	269	269	266	251	3	2970	3027
2017	122	2022-23	63	191	207	231	206	204	218	201	227	211	251	261	273	271	1	2953	3016

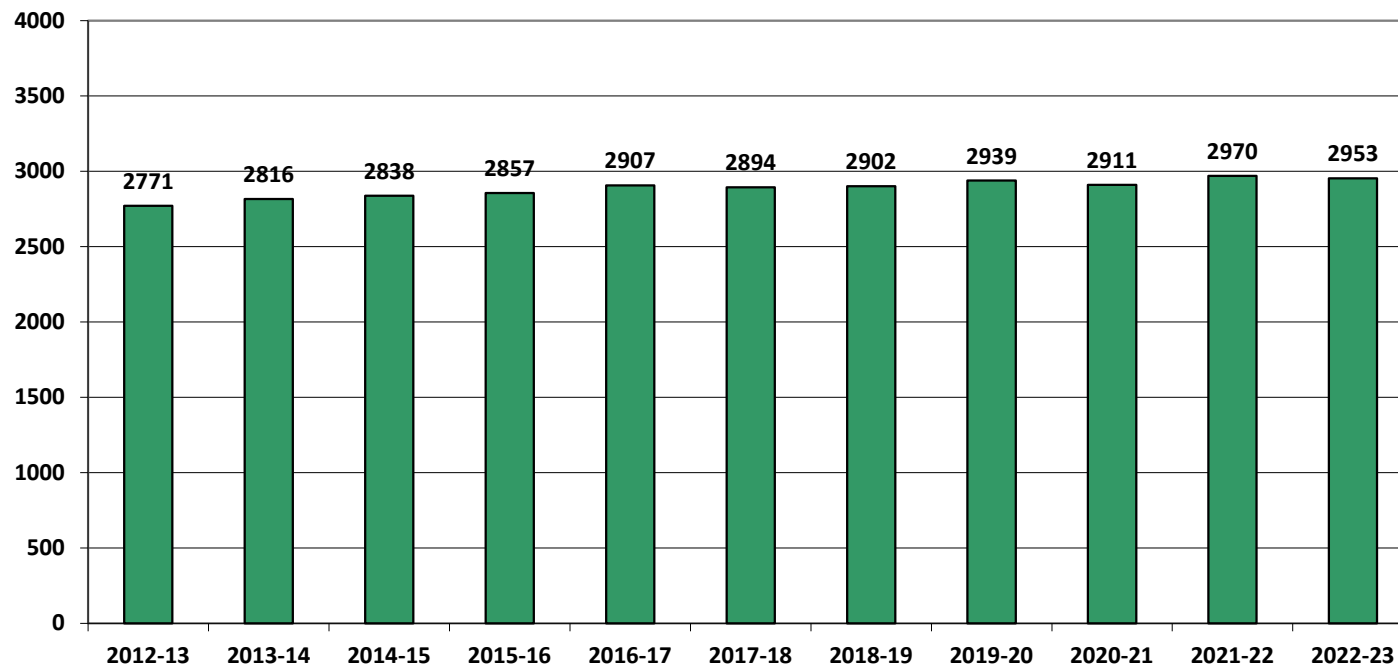
*Birth data provided by Public Health Vital Records Departments in each state.

Historical Enrollment in Grade Combinations									
Year	K-4	PK-4	5-6	7-8	K-8	PK-8	5-8	7-12	9-12
2012-13	1112	1124	477	424	2013	2025	901	1182	758
2013-14	1125	1135	474	441	2040	2050	915	1217	776
2014-15	1079	1098	481	464	2024	2043	945	1278	814
2015-16	1019	1059	500	487	2006	2046	987	1338	851
2016-17	997	1057	501	503	2001	2061	1004	1409	906
2017-18	949	1012	501	526	1976	2039	1027	1444	918
2018-19	924	985	508	524	1956	2017	1032	1469	945
2019-20	973	1038	453	525	1951	2016	978	1512	987
2020-21	967	1011	415	509	1891	1935	924	1529	1020
2021-22	1036	1093	424	452	1912	1969	876	1507	1055
2022-23	1039	1102	419	438	1896	1959	857	1494	1056

Historical Percentage Changes			
Year	K-12	Diff.	%
2012-13	2771	0	0.0%
2013-14	2816	45	1.6%
2014-15	2838	22	0.8%
2015-16	2857	19	0.7%
2016-17	2907	50	1.8%
2017-18	2894	-13	-0.4%
2018-19	2902	8	0.3%
2019-20	2939	37	1.3%
2020-21	2911	-28	-1.0%
2021-22	2970	59	2.0%
2022-23	2953	-17	-0.6%
Change	182	6.6%	

Historical Enrollment

K-12, School Years 2012-13 to 2022-23



Projected Enrollment

School District: SAU #95 -Windham, NH

10/24/2022

Enrollment Projections By Grade*																				
Birth Year	Births*		School Year	PK	K	1	2	3	4	5	6	7	8	9	10	11	12	UNGR	K-12	PK-12
2017	122		2022-23	63	191	207	231	206	204	218	201	227	211	251	261	273	271	1	2953	3016
2018	126		2023-24	63	194	212	218	234	211	208	221	202	232	214	247	265	276	1	2935	2998
2019	134		2024-25	64	207	215	223	221	240	215	211	222	206	236	211	251	268	1	2927	2991
2020	119		2025-26	64	184	230	226	226	227	245	218	212	226	209	232	214	253	1	2903	2967
2021	136		2026-27	65	210	204	242	229	232	232	248	219	216	229	206	236	216	1	2920	2985
2022	127	(est.)	2027-28	65	197	233	215	245	235	237	235	249	223	219	226	209	238	1	2962	3027
2023	128	(est.)	2028-29	66	198	219	245	218	251	240	240	236	254	226	216	230	211	1	2985	3051
2024	129	(est.)	2029-30	66	199	220	231	248	223	256	243	241	241	258	223	220	232	1	3036	3102
2025	128	(est.)	2030-31	67	197	221	232	234	254	227	260	244	246	245	254	227	222	1	3064	3131
2026	130	(est.)	2031-32	67	200	219	233	235	240	259	230	261	249	250	241	258	229	1	3105	3172
2027	129	(est.)	2032-33	68	198	222	231	236	241	245	263	231	266	253	246	245	261	1	3139	3207

Note: Ungraded students (UNGR) often are high school students whose anticipated years of graduation are unknown, or students with special needs - UNGR not included in Grade Combinations for 7-12, 9-12, etc.

Based on an estimate of births

Based on children already born

Based on students already enrolled

*Birth data provided by Public Health Vital Records Departments in each state.

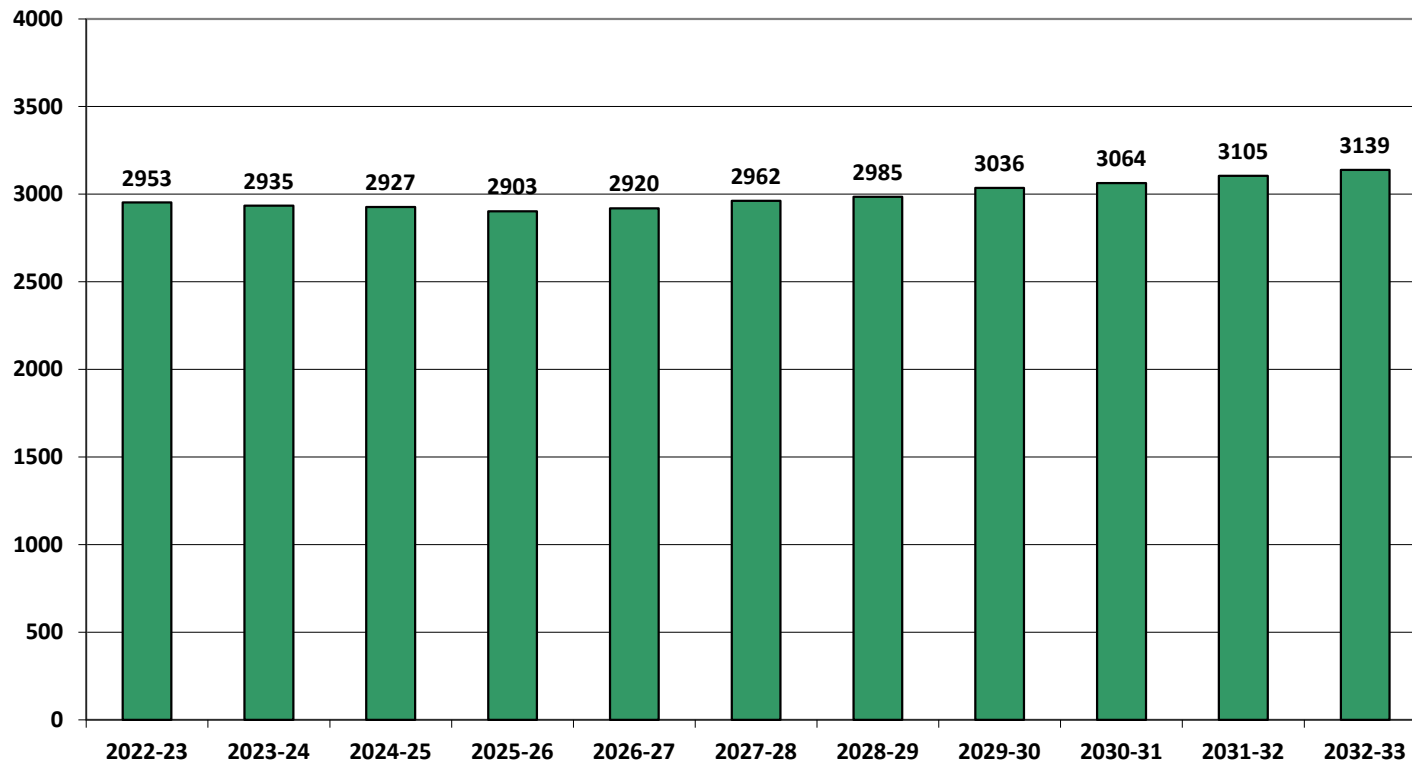
Projected Enrollment in Grade Combinations*									
Year	K-4	PK-4	5-6	7-8	K-8	PK-8	5-8	7-12	9-12
2022-23	1039	1102	419	438	1896	1959	857	1494	1056
2023-24	1069	1132	429	434	1932	1995	863	1436	1002
2024-25	1106	1170	426	428	1960	2024	854	1394	966
2025-26	1093	1157	463	438	1994	2058	901	1346	908
2026-27	1117	1182	480	435	2032	2097	915	1322	887
2027-28	1125	1190	472	472	2069	2134	944	1364	892
2028-29	1131	1197	480	490	2101	2167	970	1373	883
2029-30	1121	1187	499	482	2102	2168	981	1415	933
2030-31	1138	1205	487	490	2115	2182	977	1438	948
2031-32	1127	1194	489	510	2126	2193	999	1488	978
2032-33	1128	1196	508	497	2133	2201	1005	1502	1005

Projected Percentage Changes			
Year	K-12	Diff.	%
2022-23	2953	0	0.0%
2023-24	2935	-18	-0.6%
2024-25	2927	-8	-0.3%
2025-26	2903	-24	-0.8%
2026-27	2920	17	0.6%
2027-28	2962	42	1.4%
2028-29	2985	23	0.8%
2029-30	3036	51	1.7%
2030-31	3064	28	0.9%
2031-32	3105	41	1.3%
2032-33	3139	34	1.1%
Change	186	6.3%	

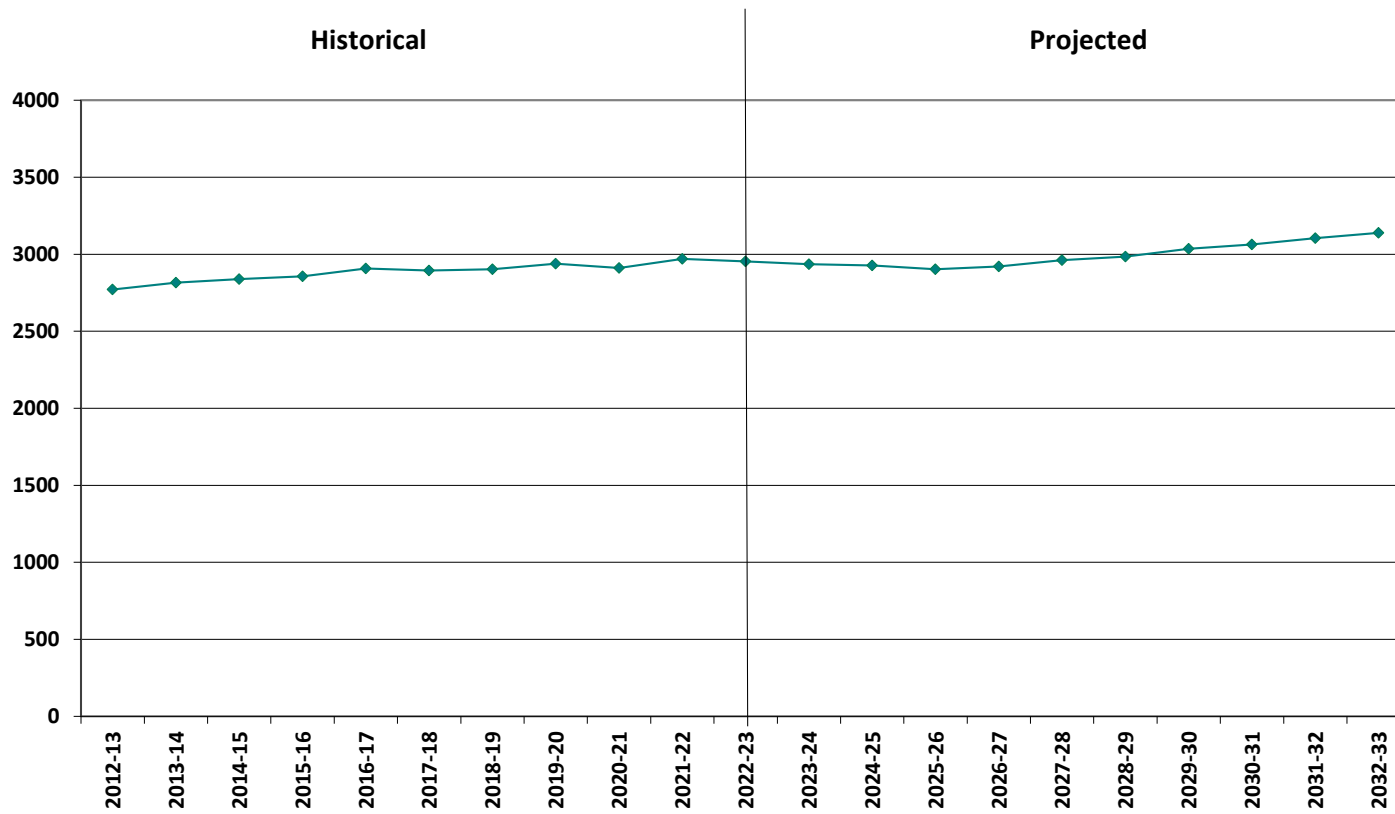
*Projections should be updated annually to reflect changes in in/out-migration of families, real estate sales, residential construction, births, and similar factors.

Projected Enrollment

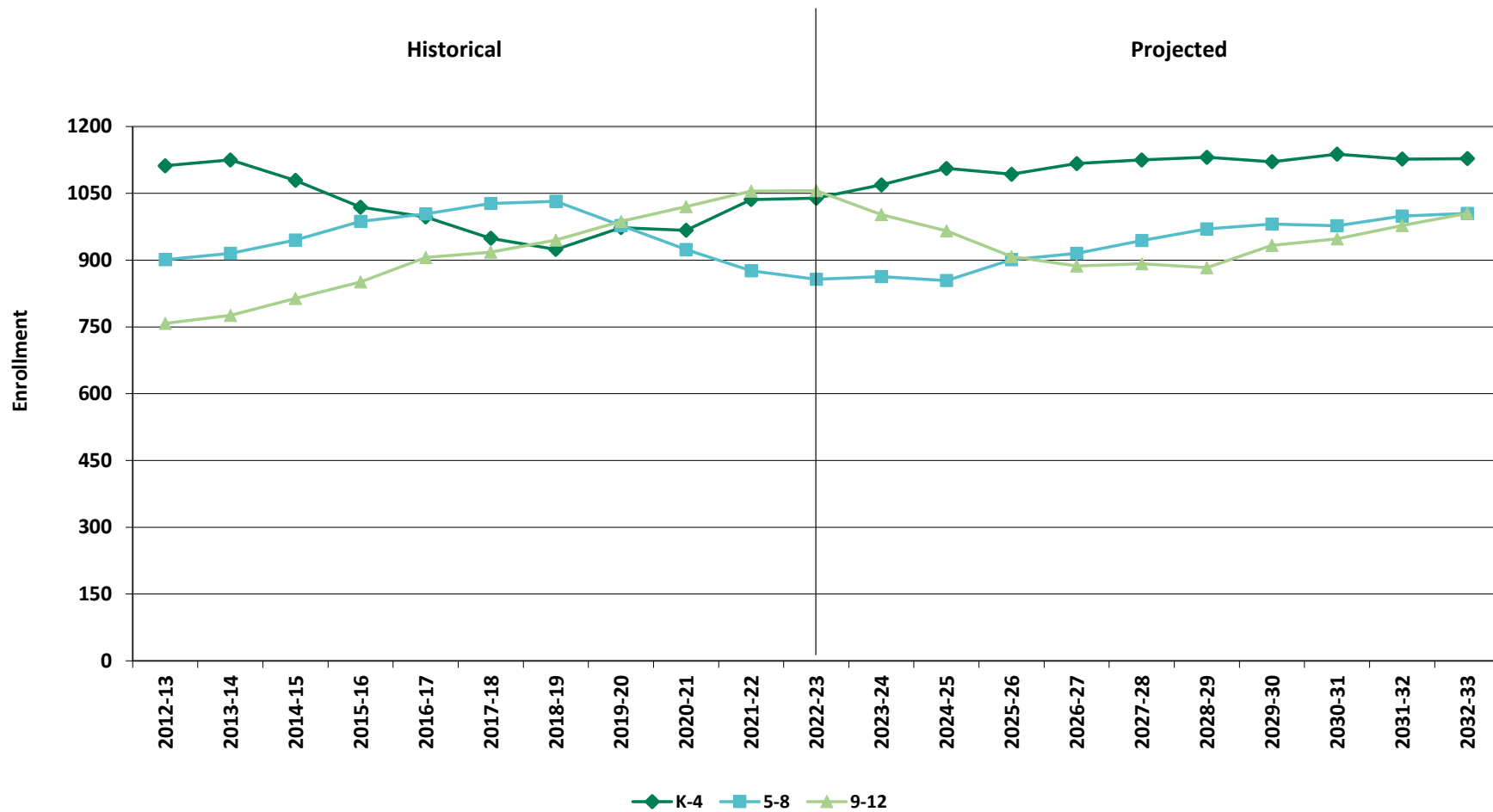
K-12, School Years 2022-23 to 2032-33



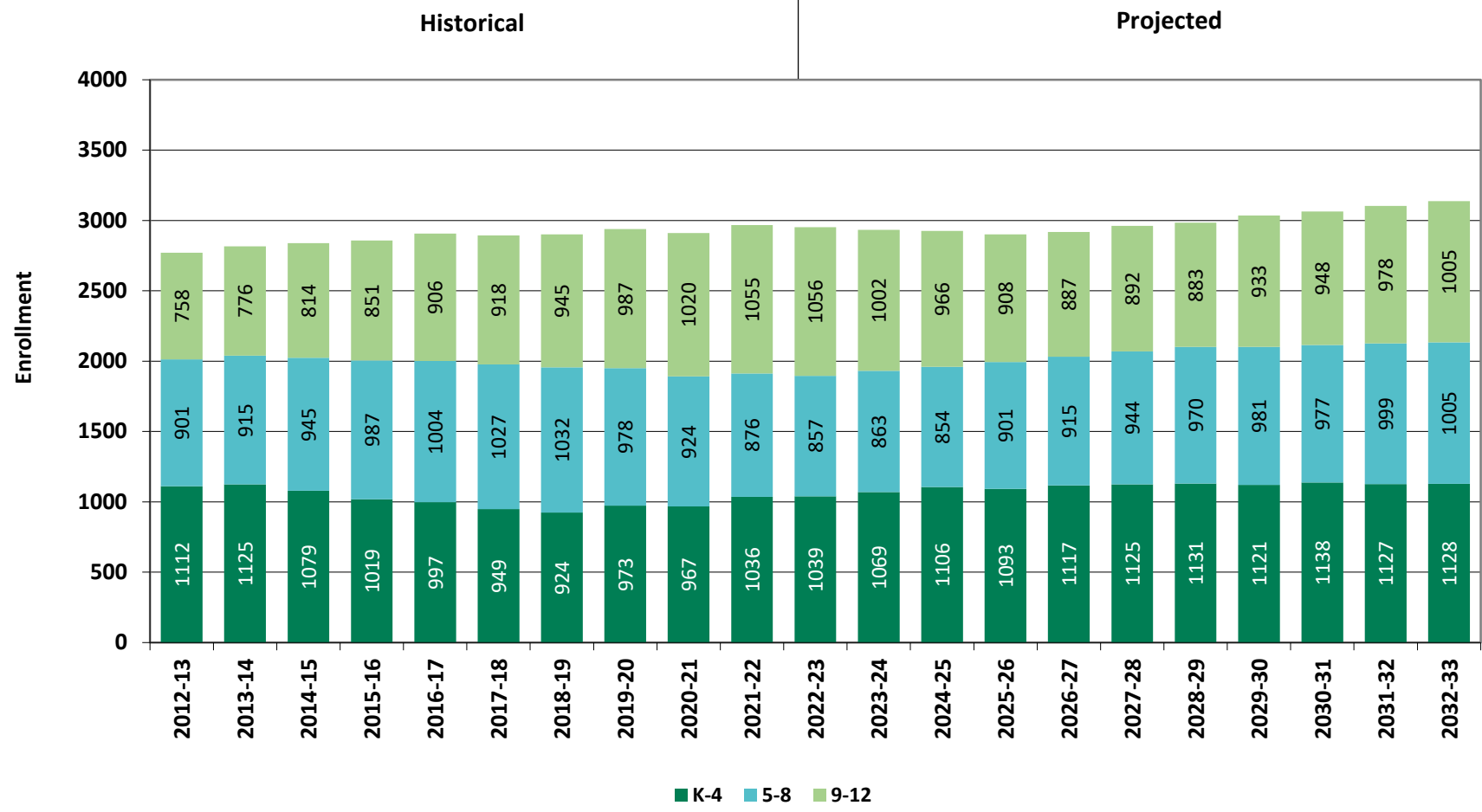
Historical & Projected Enrollment



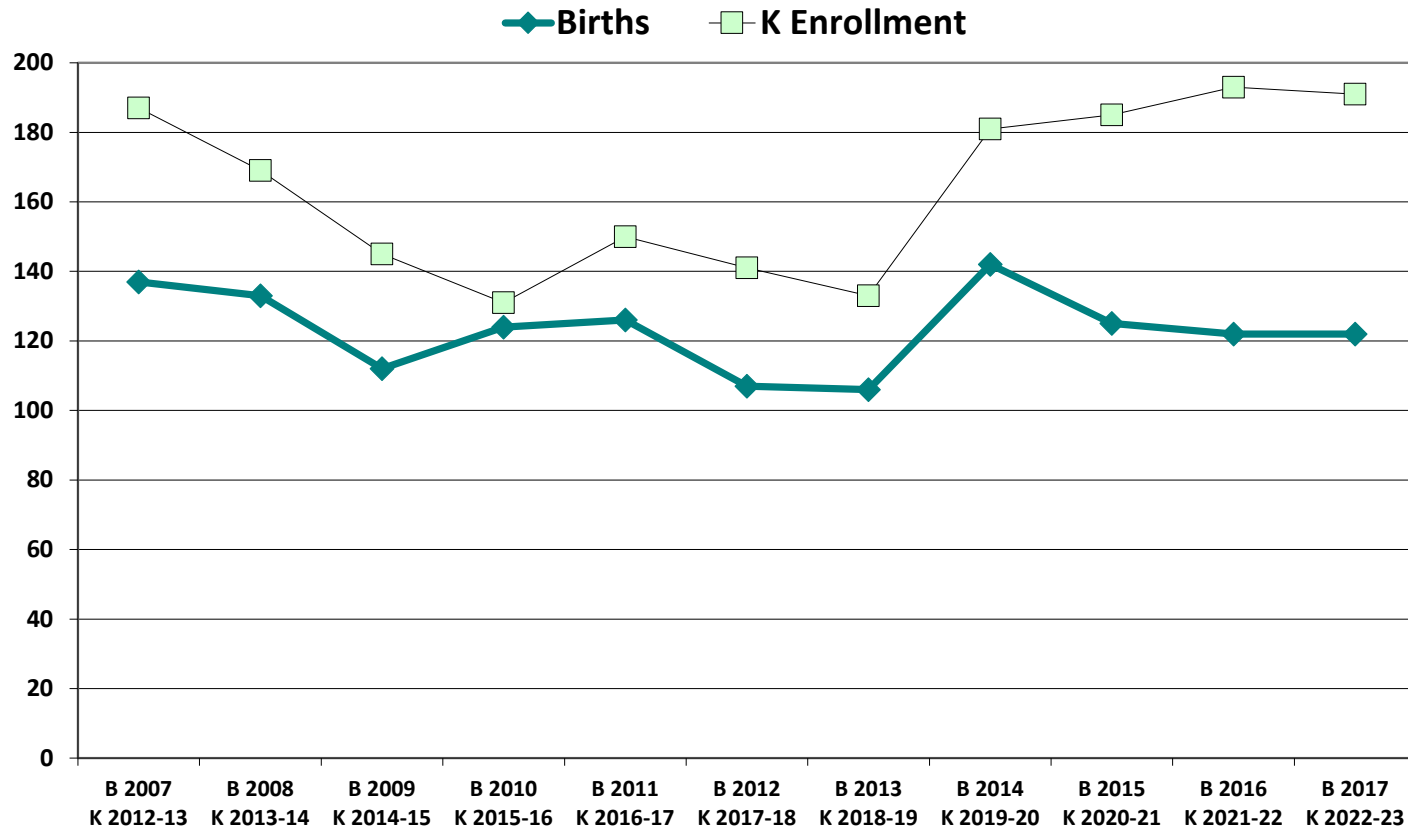
Historical & Projected Enrollments in Grade Combinations



Historical & Projected Enrollments in Grade Combinations



Birth-to-Kindergarten Relationship



Additional Information

Building Permits Issued (Source: HUD)		
Year	Single-Family	Multi-Units
2012	37	9
2018	78	0
2019	48	0
2020	43	0
2021	41	0
2022	11 to date	8 to date

Enrollment History*		
Year	Career-Tech 9-12 Total	Non-Public K-12 Total
2012-13	n/a	n/a
2018-19	n/a	n/a
2019-20	n/a	23
2020-21	n/a	37
2021-22	n/a	0
2022-23	n/a	33

Residents in Non-Public Independent and Parochial Schools (General Education)*														
Oct. 1 Enrollment	K	1	2	3	4	5	6	7	8	9	10	11	12	K-12 TOTAL
	1	0	1	2	1	2	7	4	3	5	5	0	2	33

K-12 Home-Schooled Students*	
2022	16

K-12 Residents in Charter or Magnet Schools, or Choiced-out*	
2022	68

K-12 Special Education Outplaced Students*	
2022	17

K-12 Tuitioned-In, Choiced-In, & Other Non-Residents*	
2022	0

*The above data were provided by the District, with the exception of building permit data (provided by HUD).

"n/a" signifies that information was not provided by District.

New England's PK-12 Enrollment Trends

From 2020 to 2030, the US Department of Education anticipates changes in PK-12 enrollment of -2.4% in the South, -6.5% in the West, -3.8% in the Midwest, -6.2% in the Northeast, and a total of -4.3% nationwide.

State	Fall 2020 PK - 12	Fall 2030 Projected	PK-12 Decline	% Change 2020-2030
CT	509,058	475,600	-33,458	-6.6%
ME	172,455	161,800	-10,655	-6.2%
MA	921,712	879,900	-41,812	-4.5%
NH	169,027	144,600	-24,427	-14.5%
RI	139,184	130,200	-8,984	-6.5%
VT	82,401	74,600	-7,801	-9.5%

Source: U.S. Department of Education, National Center for Education Statistics, *Enrollment In Public Schools fall 1990 to fall 2030*, Table 203.20, March 2022.

Although most New England Districts are seeing a decline in the number of births, NESDEC's experience indicates that the impact on enrollment varies from District to District. Almost half of New England Districts have been growing in PK-12 enrollment, and a similar number are declining (often in rural areas), with the other Districts remaining stable.

Reliability and Use of this Document

PROJECTION METHODOLOGY

Cohort component (survival) technique is a frequently used method of preparing enrollment forecasts. NESDEC uses this method, but modifies it in order to move away from forecasts that are wholly computer- or formula-driven. Such modification permits the incorporation of important, current district-specific information into the generation of enrollment forecasts (such as in/out-migration of students, resident births, HUD-reported building permits, etc.). Percentages are calculated from the historical enrollment data to determine a reliable percentage of increase or decrease in enrollment between any two grades. For example, if 100 students enrolled in Grade 1 in 2018-19 increased to 104 students in Grade 2 in 2019-20, the percentage of survival would be 104%, or a ratio of 1.04. Ratios are calculated between each pair of grades or years in school over several recent years.

After study and analysis of the historical ratios, and based upon a reasonable set of assumptions regarding births, migration rates, retention rates, etc., ratios most indicative of future growth patterns are determined for each pair of grades. The ratios thus selected are applied to the present enrollment statistics to project into future years. The ratios are the key factors in the reliability of the projections, assuming validity of the data at the starting point.

RELIABILITY OF ENROLLMENT PROJECTIONS

Projections can serve as useful guides to school administrators for educational planning. Enrollment projections are more reliable in Years #1-4 in the future and less reliable in the "out-years." Projections six to ten years out may serve as a guide to future enrollments and are useful for planning purposes, but they should be viewed as subject to change given the likelihood of potential shifts in underlying assumptions/trends, such as student migration, births as they relate to Kindergarten enrollment, and other factors.

Projections that are based upon **the children who already are in the district** (the current K-12 population only) will be the most reliable. The second level of reliability will be for those children already **born into the community but not yet old enough to be in school**. The least reliable category is the group for which an estimate must be made **to predict the number of births**, thereby adding additional uncertainty. See these three multi-colored groupings on the "Projected Enrollment" tab.

Annual updates allow for early identification of recent changes in historical trends. When the actual enrollment in a grade is significantly different (higher or lower) from the projected number, it is important (yet difficult) to determine whether this is a one-year aberration or whether a new trend may have begun. **In light of this possibility, NESDEC urges all school districts to have updated enrollment forecasts developed by NESDEC each October.** This service is available at no cost to affiliated school districts.

USING THIS INFORMATION ELECTRONICALLY

If you would like to extract the information contained in this report for your own documents or presentations, you can use screenshots, which can be inserted into PowerPoint slides, Word documents, etc. Because screenshots create graphics, the image is not editable. Please feel free to contact us if you need assistance in this matter, by phone (508-481-9444) or by email (ep@nesdec.org).